



L-UFFIĊĊJU TAL-PRIM MINISTRU

MALTA

OFFICE OF THE PRIME MINISTER

*Direttorat għall-Akkwist Settorjali*

*Sectoral Procurement Directorate*

21<sup>st</sup> July 2021

**REFERENCE NUMBER: SPD3/2021/030**

**TENDER FOR THE DESIGN, SUPPLY, DELIVERY AND INSTALLATION OF LABORATORY FURNITURE AT THE GOVERNMENT EXPERIMENTAL FARM, MINISTRY FOR GOZO, IN THE CONTEXT OF THE INTERREG ITALIA-MALTA SIMASEED PROJECT - SIMASEED PROCUREMENT 8 (2021)**

**Clarification No. 3**

---

**Clarification Requests**

---

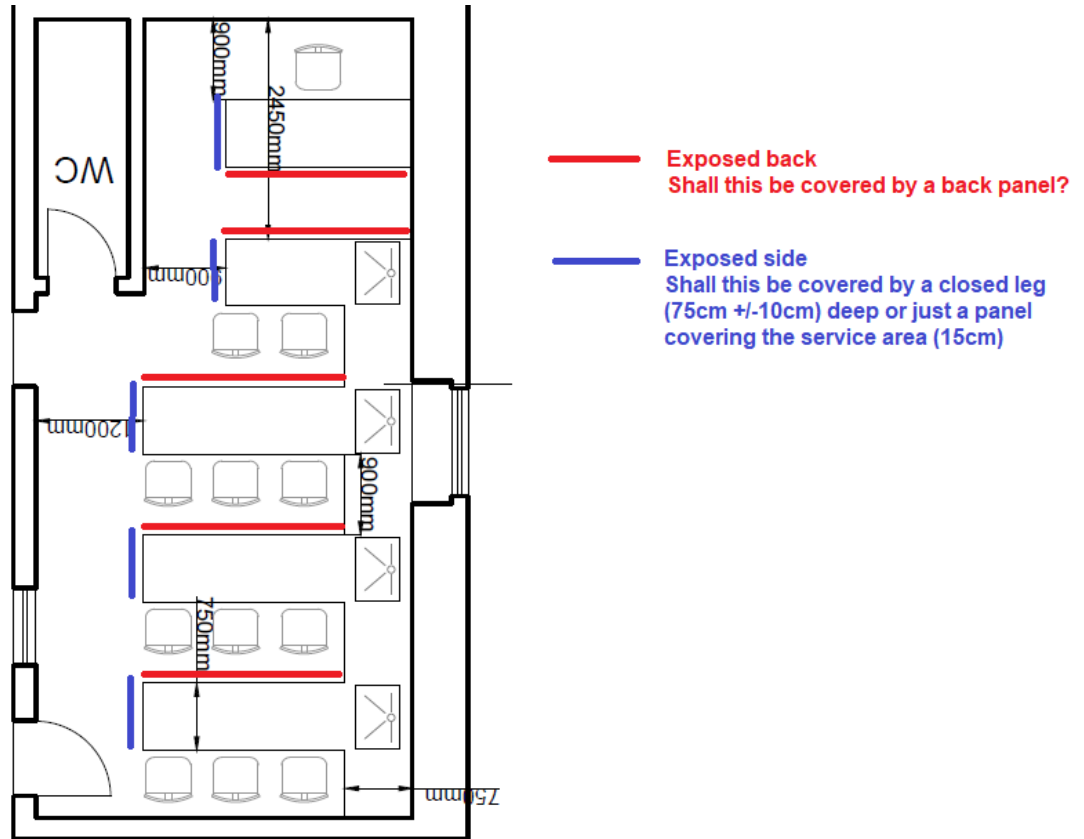
Question 1: Item 1: Laboratory Furniture Framework and Worktops  
Item 1a - Laboratory Furniture Framework Re-Item 1a –

- Where necessary, the frame needs to be fitted with end panels.

Please clarify whether bidders are to provide a panel covering only the service area (which is approx. 150mm wide) or a complete closed leg covering the depth of the bench (75cm +/-10cm). This applies to Utility and Sample preparation Room (2 exposed sides), Analytical Room (4 or 3 exposed sides), Micro-biology Lab (1 exposed side), Teaching Room (5 or 6 exposed sides)

**Answer 1: The end panel should completely cover the exposed side.**

Question 2: Please confirm that bidders are to quote also for 5 in no. back panels for instances where the back of a bench is exposed as shown below;



**Answer 2:** This is being confirmed.

**Question 3:** Re- SECTION 3 – SPECIFICATIONS/TERMS OF REFERENCE (Note 3)  
Item 1b - Worktop benches

Rather than being one whole unit, worktop benches should be divided into smaller units, of a minimum length of 1m, allowing for a degree of flexibility.

This approach is highly discouraged, and workbenches should have worktops with the minimal amount of seams, especially in wet areas. This to avoid possible ingress of water over underbench cabinets. Hence please confirm whether bidders are free to offer worktop lengths to minimize the number of seams.

**Answer 3:** Please note that the indicated length is given as a minimum. Solutions/options that are in line to the terms and conditions [exceeds the minimum length indicated] are acceptable. It is the



**intent of the Contracting Authority to leave a degree of flexibility in order to accommodate new equipment in the future.**

Question 4: There is no mention about the specifications of worktop material. Can you please confirm that bidders are to quote for worktops made of high-pressure compact laminates according to EN 438-4:2005 for indoor scientific furniture applications and with a transparent top coat of Electron Beam Curing to enhance the scratch and chemical resistance as per industry standard?

**Answer 4: According to the tender document, the material of the worktop benches needs to be heat-, chemical-, and scratch- resistant. Moreover, the surface of the worktop benches needs to be smooth, non-porous and does not support the growth of microorganisms, such as bacteria and fungi. Submissions are to include proof attesting to this.**

Question 5: Re- SECTION 3 – SPECIFICATIONS/TERMS OF REFERENCE (Note 3)  
Item 1b - Worktop benches

In the case of the sink area installation, the worktop needs to be prefabricated with holes, allowing the incorporation of sinks, drip cups and service taps.

Can you please confirm that sinks and drip cups made out of polypropylene material are acceptable?

**Answer 5: According to the tender document (Item 3b – Eight Laboratory Sinks), the sinks need to be made up of white ceramic, durable, scratch and stain resistant material.**

Question 6: Re- SECTION 3 – SPECIFICATIONS/TERMS OF REFERENCE (Note 3)  
Item 2: Under-Bench Cabinets

2.1 Construction and Materials for Laboratory Under-Bench Cabinets (Items 2a, 2b and 2c)

The under-bench cabinets need to fit under the framework system quoted above, and need to have a minimum height of 75 cm and a depth of 75 cm ± 10cm.

Please note that under-bench units are less deep than the depth of the bench, this due to a 150mm of service area. Hence the depth of



L-UFFIĊĊJU TAL-PRIM MINISTRU  
MALTA

OFFICE OF THE PRIME MINISTER

*Direttorat għall-Akkwist Settorjali*

*Sectoral Procurement Directorate*

under-bench cabinets is always in the region of 500mm. Please confirm that under-bench cabinets having a depth of 500mm are acceptable.

**Answer 6: Bidders are to align strictly to the requirements indicated in the tender specifications.**

Question 7: May you please also confirm whether all under-bench cabinets shall be of movable type as mentioned under the 6th bullet of Item 1a - Laboratory Furniture Framework and whether these shall be lockable?

**Answer 7: Bidders are to align strictly to the requirements indicated in the tender specifications.**

Question 8: Re- SECTION 3 – SPECIFICATIONS/TERMS OF REFERENCE (Note 3)  
Item 3: Sink Cabinets complete with lab sinks and mixers

Item 3a – Eight Laboratory Under-Sink Cabinets

The under-sink cabinets shall cater for the installation of 10L water heaters.

Can you please confirm whether bidders are expected to quote for the 10 L water heaters, and if so to advise quantity?

**Answer 8: No, supply of the water heaters does not form part of this procurement.**

Question 9: As per question 5 above, under-bench units are less deep than the depth of the bench, this due to a 150mm of service area. Hence the depth of under-bench cabinets is always in the region of 500mm. This also applies to under sink cabinets.

Please confirm that under-sink cabinets having a depth of 500mm are acceptable.

**Answer 9: If the sink is fitted in a stand-alone unit, this unit will need to be of exactly the same height and depth of the other furniture setup.**

Question 10: Re- SECTION 3 – SPECIFICATIONS/TERMS OF REFERENCE (Note 3)  
Item 3: Sink Cabinets complete with lab sinks and mixers



L-UFFIĊĊJU TAL-PRIM MINISTRU

MALTA

OFFICE OF THE PRIME MINISTER

*Direttorat għall-Akkwist Settorjali*

*Sectoral Procurement Directorate*

Item 3b – Eight Laboratory Sinks: Four for Teaching Room, one for Micro-biology Lab, two for Analytical Room, and one for Utility and Sample Preparation Room

The sinks need to be made up of white ceramic, durable, scratch and stain resistant material

Can you please confirm that sinks made out of polypropylene material are acceptable which also offer high chemical resistance and also offer superior safety against ceramic sinks, are equally acceptable?

**Answer 10: Bidders are to align strictly to the requirements indicated in the tender specifications.**

Question 11: Re- SECTION 3 – SPECIFICATIONS/TERMS OF REFERENCE (Note 3) & Clarification Note 1

Item 5: High Cabinets

Can the CA advise whether the wall-mounted cabinets shall be lockable?

**Answer 11: Bidders are to align strictly to the requirements indicated in the tender specifications.**

Question 12: Re- SECTION 3 – SPECIFICATIONS/TERMS OF REFERENCE (Note 3) & Clarification Note 1

Item 6: Emergency combination shower and eye wash station to be installed where directed

The emergency shower is to be wall-mounted.

May you please clarify the term wall-mounted, since from the description of this item “Emergency combination shower and eye wash station” this item entails a wall support, but it is also supported on the floor by means of a plate. Hence can the CA confirm that a free standing Emergency combination shower and eye wash station which is fixed to the wall and having a water supply coming from the wall is acceptable?

**Answer 12: Bidders are to align strictly to the requirements indicated in the tender specifications.**

Question 13: Re-DRAWINGS



L-UFFIĊĊJU TAL-PRIM MINISTRU  
MALTA

OFFICE OF THE PRIME MINISTER

*Direttorat għall-Akkwist Settorjali*

*Sectoral Procurement Directorate*

2 Options have been uploaded as Plan Drawings with the Tender Document.

Can the CA advise whether bidders are expected to quote for both options? Or are bidders free to quote for any of the 2 options?

**Answer 13: The bidders are expected to bid on the information provided in the bill of quantities. As stated in the tender, the successful bidder is then expected to assist the Contracting Authority in the fine tuning and eventual adoption of the final laboratory layout and design.**

Question 14: Can the CA confirm whether bidders are expected to quote for the canopy which is shown in the Analytical Room, and in case of an affirmative reply, to provide specs?

**Answer 14: No, bidders are not expected to quote for the canopy.**

Question 15: Can the CA confirm whether bidders are to provide for drain pipes throughout the rooms (other than those required for the sinks) and for any other mechanical fixations or will water supply and drain points be readily available for each sink? If already provided, please advise whether services are recessed or surface?

**Answer 15: Water supply and drain points will be provided. They will be surface mounted.**

Question 16: Can the CA extend the period of submission of offers by 15 days in view of the above clarifications?

**Answer 16: Due to limited timeframes to execute the project, an extension of 15 days cannot be given. Still, tender submission period is being extended till Friday 30th July 2021 at 09:30a.m.**

---

All other tender documents, conditions and requirements, which are not superseded by this Clarification, remain in place.

*Sectoral Procurement Unit 3  
Sectoral Procurement Directorate*